

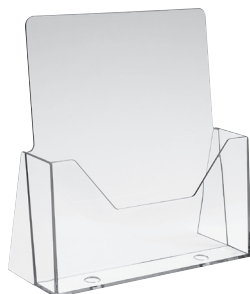


ACRYLIC DISPLAYS

Acrylic Literature Holder

Brochure Holders

Acrylic Brochure Holders are lightweight but strong and durable. Econoco offers two versions, one for broadsheets and the other for folded literature. These holders are ideal for countertop and POS displays to inform shoppers and spark sales.



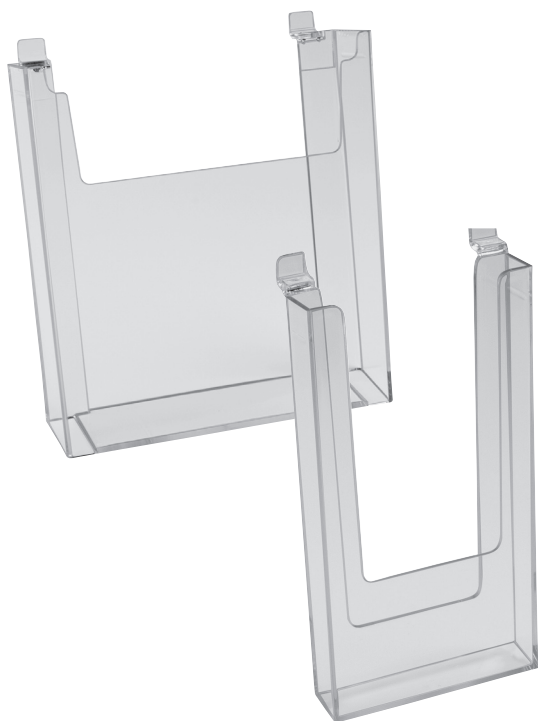
**Countertop
Literature Holder**

IM/CT811 - Holds 8 1/2"W x 11"H



**Slantback w/ Pocket
For Counter Top**

HP/SH-LP1 - 8 1/2"W X 11"H
w/ 4" Pocket



Slatwall Literature Holders

IM/SW49 - Holds 4"W X 9"H
IM/SW811 - Holds 8 1/2"W x 11"H



Gridwall Literature Holders

IM/GW811 - Holds 8 1/2"W x 11"H

Acrylic Display Risers, Cubes, & Easels

Cube, Risers, and Easels

Select from our inventory of display cubes, risers, and easels. Choose to highlight several pieces from a collection or one. These pieces may also be used together to create multi-level displays on countertops and merchandisers that draw attention to your merchandise and spark sales.



Display Cubes

FF/DC0610 - 6"W x 12"L x 8"H
FF/DC0810 - 8"W x 12"L x 8"H
FF/DC1210 - 12"W x 12"L x 12"H

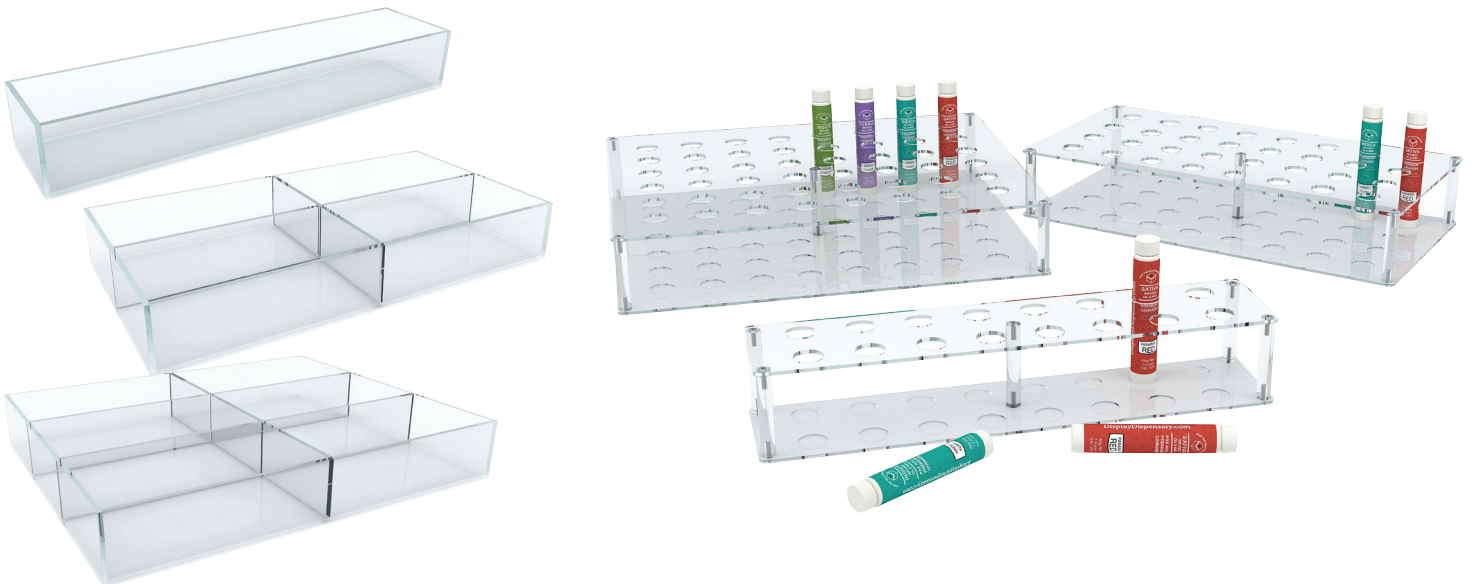
Riser Sets

FF/DR5010 - 3", 4", and 5"
FF/DR4410 - 3", 5", and 7"
FF/DR4510 - 4", 6", and 8"

Display Easels

FF/E6010 - 3 1/2"W x 4"H
FF/E6210 - 5 1/2"W x 6"H
FF/E6610 - 9"W x 11"H
FF/E3013 - 6"W x 8"H

Acrylic Display Trays



Display Trays

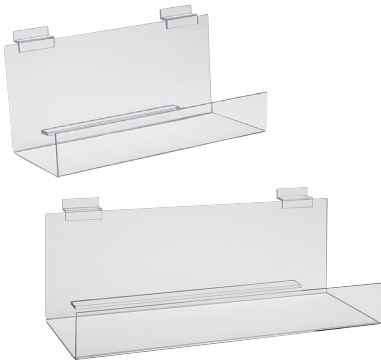
DDTRAYS - 16 1/16"W x 3 11/16"L x 2 1/2"H
DDTRAYM - 16 1/16"W x 8 11/16"L x 2 1/2"H
DDTRAYL - 16 1/16"W x 13 11/16"L x 2 1/2"H

Tube Holders

DDTUBES - 16 11/16"W x 3-11/16"L x 3"H
DDTUBEM - 16 11/16"W x 8 11/16"L x 3"H
DDTUBEL - 16 11/16"W x 13 11/16"L x 3"H

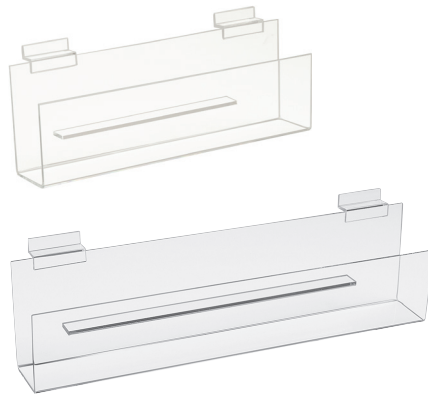
Acrylic Shelves, Trays & Bins for Slatwall

We offer specialized storage and display shelving for greeting cards, hosiery, dump bin, shelving that offers extra support for heavier merchandise, as well as shelves with a lip, perfect for displaying books and magazines.



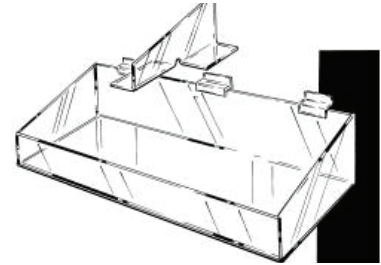
**Book Shelf
With 2" Lip**

HP/BS12 - 12"L x 4"D
HP/BS16 - 16"L x 4"D



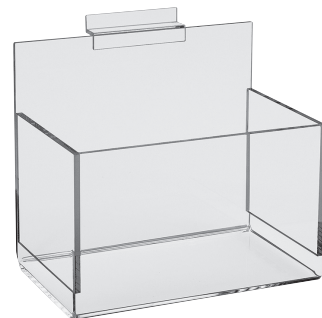
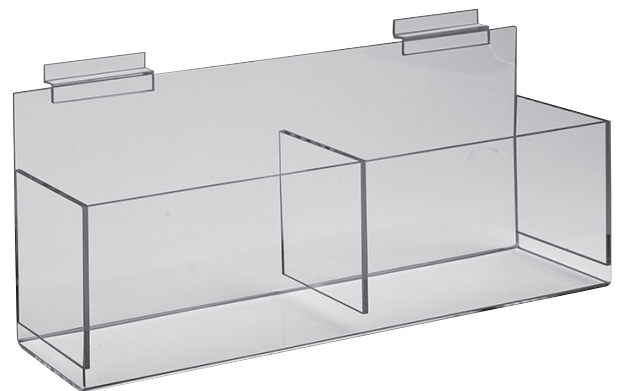
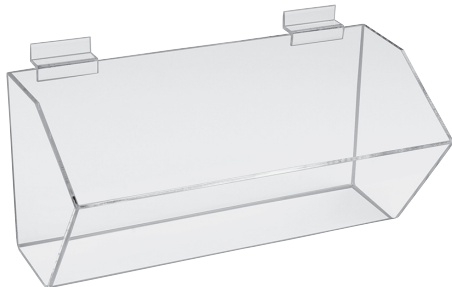
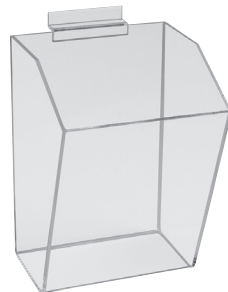
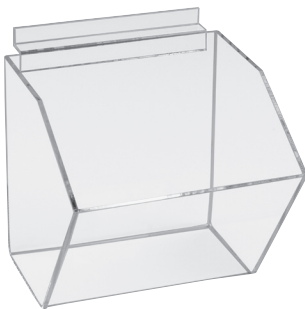
**Greeting Card Shelf
With 3" Lip**

HP/GCS12 - 12"L x 2"D
HP/GCS16 - 16"L x 2"D



**Extra Support Tray
With High Sides**

HP/EST2408 - 24"W x 8"D x 3"H



Modular Bins

HP/DB66 - 6"W x 6"H
HP/DB69 - 6"W x 9"H
HP/DB1206 - 12"W x 6"H

Hosiery Bins

FF/AD2024 - Single
FF/AD2124 - Double

Acrylic Shoe Shelves

Get creative and extend your merchandising capabilities - use the shoe shelves to display small electronics, accessories, beauty supplies, and more!



Styrene Utility Shelf

JM410/ST - 10"L x 4"D

JM4SL/ST - 10"L x 4"D

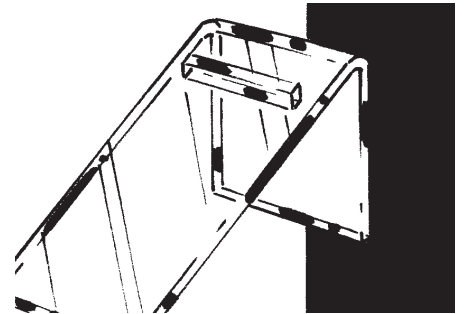
w/ 1" Sign Slot

JM612/ST - 12"L x 6"D



4" X 10" Acrylic Shoe Shelf For Slatwall

JM410/AC



4" X 10" Acrylic Shoe Shelf For Slatwall

JM410/AC



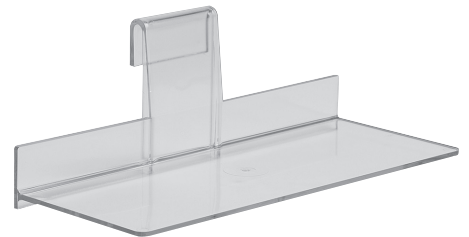
6 1/2" X 12" Slanted Cap Shelf w/ Front Lip

JMCP/ST



Set Of 3 Beveled Edge Z-Shaped Shoe Risers

FF/ZSHOE-3



4" X 10" Shoe Shelf For Grid Panel

JGR410/ST

Miscellaneous



12" Polycarbonate Bracket w/ Suction Cup

JMP12



Comes In Three Sizes

HP/SFB-S - 11"L X 8 1/2"W

HP/SFB-M - 11" L X 10 "W

HP/SFB-L - 11"L x 11"W

Acrylic Sign Holders

Countertop Sign Holders

Econoco stocks an array of acrylic sign holders for every retail establishment. Some options include 8.5" x 11" free standing holders for countertops and POS use, freestanding folded literature holders for brochures..

Block Sign Holder

HVACTK33 - 3"
HVACTK66 - 6"



Bottom Load Sign Holders For Counter Tops

HP/CT57V - 5 1/2"W x 7"H
HP/CT57H - 7"W x 5 1/2"H
HP/CT711H - 11"W x 7"H
HP/CT711V - 7"W x 11"H
HP/CT811H - 11"W x 8 1/2"H
HP/CT811V - 8 1/2"W x 11"H
HP/CT114V - 11"W x 14"H



Top Load Sign Holders For Counter Tops

HPCT57HTP - 7"W x 5 1/2"H
HPCT711HTP - 11"W x 7"H
HPCT811VTP - 8 1/2"W x 11"H
HPCT114VTP - 11"W x 14"H



Slantback Sign Holders For Counter Tops

HP/CT57H-SB - 7"W x 5 1/2"H
HP/CT57V-SB - 5 1/2"W x 7"H
HP/CT811V-SB - 8 1/2"W x 11"H



Sign Holders For Slatwall Or Gridwall

HP/SG57H - 7"W x 5 1/2"H
HP/SG57V - 5 1/2"W x 7"H
HP/SG711H - 11"W x 7"H
HP/SG811H - 11"W x 8 1/2"H
HP/SG811V - 8 1/2"W x 11"H



Polycarbonate Sign Holder w/ Clamp

JPC57 - 7"W x 5 1/2"H
JPC711 - 11"W x 7"H

