

# ALTA

Alta System



**ECONOCO**

WHERE VALUE IS ALWAYS DISPLAYED



## Alta Wall Module



T500SC

- Clean, sleek and streamlined perimeter merchandising unit
- 96"H x 50"W x 16"D
- 2" square satin chrome steel tubing
- Hidden wall mounts for sleek appearance – attaches with 2 screws only
- Uprights have universal, rear double-slots (1/2" slots on 1" centers) that are 48" apart on center.
- Must use off-set shelf brackets to prevent shelf from slipping off brackets.
- Accepts rear-mounted 48" x 13" shelves and 48"L hang bars
- (4) adjustable levelers
- Shipped KD



Shown with two T500SC Wall Modules with the following accessories:

- |   |                                   |
|---|-----------------------------------|
| 6) 48" melamine shelves – TSF481H       | 1) 12" straight arm – RH/12-SC    |
| 6) 12" left shelf bracket – GHSL12/SC   | 1) 7-cube waterfall – RH/7B-SC    |
| 6) 12" right shelf bracket – GHSR12/SC  | 2) 4' rectangular tubing – RE4-SC |
| 4) 12" hangrail bracket – CR12-SC       | 2) 2' Rectangular tubing – RE2-SC |
| 4) 3" rectangular tube bracket – CR3-SC | 8) end caps – EC4-SC              |



There are a variety of setup options with the Alta Wall Modules for folded and hanging apparel





*Exposed, rectilinear steel elements give the ALTA System a state-of-the-art, structural look. The system attaches to the wall with two screws. A satin chrome finish over the steel, with hard rock maple shelves and tops, results in a strikingly elegant appearance. Create a visually powerful, coordinated retail environment by using ALTA System display units throughout the store perimeter and the selling floor.*

## Cross Merchandising 4-Way Rack



**T502FRSC  
Frame Only**



**T502SC-H  
With Maple Wood Shelves**

- Uniquely flexible merchandiser combining four display arms and eight optional shelves and built-in graphics frame
- 44"L x 24"W x 72"H
- Four 16" rectangular arms with tab stops - adjusts from 45" to 72" in height (every 3")
- 12" x 12" sign frame - 8" x 8" (visible)
- 2" square steel tubing inner core and sign frame
- All steel tubing finished in satin chrome
- Universal slotting front and back for shelf brackets (1/2" slots on 1" centers)
- Shelf Unit includes 8) 11<sup>3</sup>/<sub>4</sub>" x 12" x 3/4" thick MDF/ Melamine shelves in Hard Rock Maple finish.
- Four Adjustable levelers
- Ships KD (UPS-able)



**T502SC-H  
Cross Merchandising 4-Way Rack**







**T503SC-H  
Island Merchandiser**

- Shown with the following accessories:
- 3) 48" melamine shelves – **TSF481H**
  - 3) 12" left shelf bracket – **GHSL12/SC**
  - 3) 12" right shelf bracket – **GHSR12/SC**
  - 2) 12" hang bar brackets – **CR12-SC**
  - 1) 4' rectangular tubing – **RE4-SC**
  - 2) tubing end caps – **EC4-SC**



**Island Merchandiser**  
Shown with all shelves  
or with only hang bars.

**Island Merchandiser**



**T503FRSC  
Frame Only**



**T503SC-H  
Frame with Wood Top**

- Bold, 2-sided merchandiser (use shelves, hang bars or both) with a generous top shelf for displays, forms or signage.
- 48" L x 34" W x 54" H.
- 2" square steel tubing with satin chrome finish.
- Accepts 48" x 13" shelves and 48" L hangrails.
- Universal slotting front and back for shelf brackets and hangrails ( $\frac{1}{2}$ " slots on 1" centers).
- 44" x 30" x  $\frac{3}{4}$ " thick MDF/Melamine top shelf in Hard Rock Maple finish.
- Four Adjustable levelers.
- Ships KD (UPS-able).



## Display Nesting Tables



**T501FRSC**  
Frame Only



**T501SC-H**  
With Wood Top

- Large capacity, multi-purpose display table
- 60"L x 32"W x 30"H
- 2" square satin chrome steel tubing
- 3/4" thick MDF/Melamine top in Hard Rock Maple finish
- Four Adjustable levelers
- Ships KD (UPS-able)



**T501SC-H**  
Large Display Table



Display Tables work as nesting tables for greater impact in retail environment.





**T505SC-H**  
Medium Display Table



**T504SC-H**  
Pedestal Table

## Tables



**T505FRSC**  
Frame Only



**T505SC-H**  
With Wood Top

- Just the right size for smaller displays & accessories
- 36"L x 24"W x 24"H
- 2" square satin chrome steel tubing
- 3/4" thick MDF/Melamine top in hard rock maple finish
- Four Adjustable levelers
- Ships KD (UPS-able)



**T504FRSC**  
Frame Only



**T504SC-H**  
With Wood Top

- Ideal height for featured items – 42" overall-floor to top
- 24"L x 24"W x 42"H
- 2" square satin chrome steel tubing
- 3/4" thick MDF/Melamine top in hard rock maple finish
- Four Adjustable levelers
- Ships KD (UPS-able)

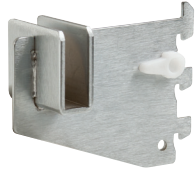


# ALTA System Accessories - Alta System is designed to accept all President Line hardware with 1/2" slots on 1" centers.

## Rectangular Tubing Hangrail Brackets



**CR1-SC**  
1" Bracket  
Satin Chrome finish



**CR3-SC**  
3" Bracket  
Satin Chrome finish



**CR12-SC**  
12" Bracket  
Satin Chrome finish

## Hang Bar & End Caps



**RE4-SC**  
48" Rectangular 1/2" x 1 1/2" Tubing  
Satin Chrome finish

**RE2-SC**  
24" Rectangular 1/2" x 1 1/2" Tubing  
Satin Chrome finish

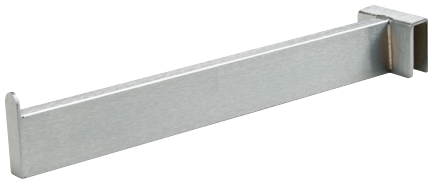


**EC5-SC**  
End Cap  
Satin Chrome finish



**EC5-SC**  
End Cap with 1" extension  
Satin Chrome finish

## Saddle Mount Faceouts



**RH/12-SC**  
12" Straight Arm  
Satin Chrome finish



**RH/7B-SC**  
7-Cube Waterfall  
Satin Chrome finish



## Shelf Brackets



**GA12**  
12" Tap-In Shelf Bracket  
Chrome finish



**GHSL12/SC**  
12" Left Offset Shelf Bracket  
Satin Chrome finish



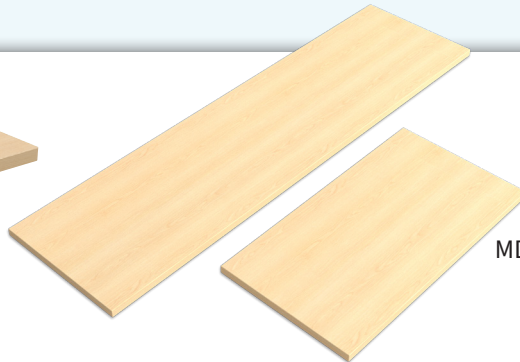
**GHSR12/SC**  
12" Right Offset Shelf Bracket  
Satin Chrome finish



## Shelves



**TSF121H**  
11 3/4" x 12" x 3/4" thick  
MDF/Melamine in Hard Rock Maple finish  
For use with **T502SC**  
**4-Way Cross Merchandiser Rack**  
Use: 2) **GA12** Shelf Brackets per shelf.



**TSF481H** - 13" x 48" x 3/4" thick  
**TSF1324H** - 13" x 24" x 3/4" thick  
MDF/Melamine in Hard Rock Maple finish  
For use with **T500SC Wall Module**  
Use: 1) **GHSR12/SC** Shelf Bracket  
1) **GHSL12/SC** Shelf Bracket  
per shelf.