

**ALTA System Accessories** - Alta System is designed to accept all President Line hardware with 1/2" slots on 1" centers.

**Rectangular Tubing Hangrail Brackets**



**CR1-SC**  
1" Bracket  
Satin Chrome finish



**CR3-SC**  
3" Bracket  
Satin Chrome finish



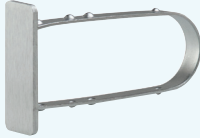
**CR12-SC**  
12" Bracket  
Satin Chrome finish



**Hang Bar & End Caps**



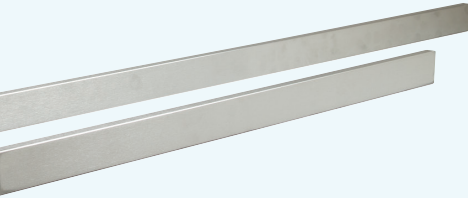
**RE4-SC**  
48" Rectangular 1/2" x 1 1/2" Tubing  
Satin Chrome finish



**EC5-SC**  
End Cap  
Satin Chrome finish



**EC5-SC**  
End Cap with 1" extension  
Satin Chrome finish



**RE2-SC**  
24" Rectangular 1/2" x 1 1/2" Tubing  
Satin Chrome finish

**Saddle Mount Faceouts**



**RH/12-SC**  
12" Straight Arm  
Satin Chrome finish



**RH/7B-SC**  
7-Cube Waterfall  
Satin Chrome finish



**Shelf Brackets**



**GA12**  
12" Tap-In Shelf Bracket  
Chrome finish



**GHSL12/SC**  
12" Left Offset Shelf Bracket  
Satin Chrome finish



**GHSR12/SC**  
12" Right Offset Shelf Bracket  
Satin Chrome finish



**Shelves**



**TSF121H**  
11 3/4" x 12" x 3/4" thick  
MDF/Melamine in Hard Rock Maple finish  
For use with **T502SC**  
**4-Way Cross Merchandiser Rack**  
Use: 2) **GA12** Shelf Brackets per shelf.



**TSF481H** - 13" x 48" x 3/4" thick  
**TSF1324H** - 13" x 24" x 3/4" thick  
MDF/Melamine in Hard Rock Maple finish  
For use with **T500SC Wall Module**  
Use: 1) **GHSR12/SC** Shelf Bracket  
1) **GHSL12/SC** Shelf Bracket  
per shelf.





Alta Wall Module



T500SC

- Clean, sleek and streamlined perimeter merchandising unit
- 96"H x 50"W x 16"D
- 2" square satin chrome steel tubing
- Hidden wall mounts for sleek appearance – attaches with 2 screws only
- Uprights have universal, rear double-slots (1/2" slots on 1" centers) that are 48" apart on center.
- Must use off-set shelf brackets to prevent shelf from slipping off brackets.
- Accepts rear-mounted 48" x 13" shelves and 48"L hang bars
- (4) adjustable levelers
- Shipped KD



Shown with two T500SC Wall Modules with the following accessories:

- |   |                                   |
|---|-----------------------------------|
| 6) 48" melamine shelves – TSF481H       | 1) 12" straight arm – RH/12-SC    |
| 6) 12" left shelf bracket – GHSL12/SC   | 1) 7-cube waterfall – RH/7B-SC    |
| 6) 12" right shelf bracket – GHSR12/SC  | 2) 4' rectangular tubing – RE4-SC |
| 4) 12" hangrail bracket – CR12-SC       | 2) 2' Rectangular tubing – RE2-SC |
| 4) 3" rectangular tube bracket – CR3-SC | 8) end caps – EC4-SC              |



There are a variety of setup options with the Alta Wall Modules for folded and hanging apparel



T505SC-H  
Medium Display Table



T504SC-H  
Pedestal Table

Tables



T505FRSC  
Frame Only



T505SC-H  
With Wood Top

- Just the right size for smaller displays & accessories
- 36"L x 24"W x 24"H
- 2" square satin chrome steel tubing
- 3/4" thick MDF/Melamine top in hard rock maple finish
- Four Adjustable levelers
- Ships KD (UPS-able)



T504FRSC  
Frame Only



T504SC-H  
With Wood Top

- Ideal height for featured items – 42" overall-floor to top
- 24"L x 24"W x 42"H
- 2" square satin chrome steel tubing
- 3/4" thick MDF/Melamine top in hard rock maple finish
- Four Adjustable levelers
- Ships KD (UPS-able)



Display Nesting Tables



T501FRSC  
Frame Only



T501SC-H  
With Wood Top

- Large capacity, multi-purpose display table
- 60"L x 32"W x 30"H
- 2" square satin chrome steel tubing
- 3/4" thick MDF/Melamine top in Hard Rock Maple finish
- Four Adjustable levelers
- Ships KD (UPS-able)



T501SC-H  
Large Display Table



Display Tables work as nesting tables for greater impact in retail environment.



Exposed, rectilinear steel elements give the ALTA System a state-of-the-art, structural look. The system attaches to the wall with two screws. A satin chrome finish over the steel, with hard rock maple shelves and tops, results in a strikingly elegant appearance. Create a visually powerful, coordinated retail environment by using ALTA System display units throughout the store perimeter and the selling floor.



# Cross Merchandising 4-Way Rack



T502FRSC  
Frame Only



T502SC-H  
With Maple Wood Shelves

- Uniquely flexible merchandiser combining four display arms and eight optional shelves and built-in graphics frame
- 44"L x 24"W x 72"H
- Four 16" rectangular arms with tab stops - adjusts from 45" to 72" in height (every 3")
- 12" x 12" sign frame - 8" x 8" (visible)
- 2" square steel tubing inner core and sign frame
- All steel tubing finished in satin chrome
- Universal slotting front and back for shelf brackets (1/2" slots on 1" centers)
- Shelf Unit includes 8) 11<sup>3</sup>/<sub>4</sub>" x 12" x <sup>3</sup>/<sub>4</sub>" thick MDF/ Melamine shelves in Hard Rock Maple finish.
- Four Adjustable levelers
- Ships KD (UPS-able)



T502SC-H  
Cross Merchandising 4-Way Rack



T503SC-H  
Island Merchandiser  
Shown with the following accessories:  
3) 48" melamine shelves – TSF481H  
3) 12" left shelf bracket – GHSL12/SC  
3) 12" right shelf bracket – GHSR12/SC  
2) 12" hang bar brackets – CR12-SC  
1) 4' rectangular tubing – RE4-SC  
2) tubing end caps – EC4-SC



Island Merchandiser  
Shown with all shelves  
or with only hang bars.

# Island Merchandiser



T503FRSC  
Frame Only



T503SC-H  
Frame with Wood Top

- Bold, 2-sided merchandiser (use shelves, hang bars or both) with a generous top shelf for displays, forms or signage.
- 48"L x 34"W x 54"H.
- 2" square steel tubing with satin chrome finish.
- Accepts 48" x 13" shelves and 48"L hangrails.
- Universal slotting front and back for shelf brackets and hangrails (1/2" slots on 1" centers).
- 44" x 30" x <sup>3</sup>/<sub>4</sub>" thick MDF/Melamine top shelf in Hard Rock Maple finish.
- Four Adjustable levelers.
- Ships KD (UPS-able).