

Mirage Mini-Ladder Wall System



WHERE VALUE IS ALWAYS DISPLAYED

www.econoco.com



The Mirage Mini-Ladder rungs are designed to receive any wire grid accessory. The system is available in chrome & matte black finish. Combine the Mirage adjustable wall system with Mirage Floor Standing Costumers to create a functional and attractive retail store layout.

COMPONENTS

Mini-Ladder Post

87.5" high, including levelers. Ladder rungs are .25" dia, 3" wide on 1.5" centers. Uprights are .5" x 1.5" rectangular tubing.

Matte Black finish:
WML87/MAB

Chrome finish:
WML87/C

Wall Channel



8' long white aluminum channel may be painted to match wall color. Due to various mounting techniques in different wall materials, we do not include holes or screws for mounting.

WAC8W/W

Anchor Bracket



12"D x 6"W bracket easily mounts into Wall Channel with included hardware. Bracket can be placed anywhere along the channel.

Matte Black finish
WK13/MAB

Chrome finish
WK13/C

Floor Standing Costumers



Go with faceouts & waterfalls to create a costumer or use two towers together with assorted accessories to create an impressive free-standing merchandising unit.

Heavy 12" x 15" weighted base. Uses any grid accessories, sold separately. Matte Black finish.

72" Upright - # ML73/MAB

54" Upright - # ML55/MAB

Interior Shelves



Off The Wall – The flexibility of the Mirage Mini-Ladder system allows the store merchandiser to easily change the appearance of any department by re-configuring the location of the vertical posts - by adding shelves or hangrails and by varying the distance between posts.

Just loosen two screws in the Mirage anchor bracket and you can adjust the location of the Mirage mini-ladder post. Changes in fixturing to meet seasonal merchandising demands can be made with very little effort.



Interior shelves go between Mini-Ladder Posts that are 48" apart on center. Perforated metal shelves prevent the accumulation of dust. Designed to be used with Interior Shelf brackets. Matte Black finish. 43"L x 14-1/2"D.

MLS43/MAB



Interior Shelf Brackets must be used in pairs. Unique design fits Mini-Ladder Posts on either left or right sides. Set screws lock them in place. Matte Black finish.

SML11/MAB

Exterior Shelves



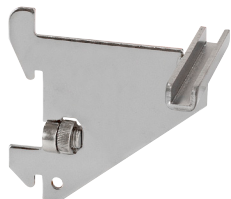
On The Wall – Exterior shelves are also great when retail space has existing heavyweight slotted standards. Ladder posts can be mounted to standards with 1" slots on 2" centers using the Mini-Ladder Bracket for Standards (RML6). You may also mount the Ladder Posts directly to wall using two Wall brackets (BML3/MAB).



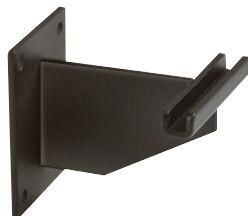
Perforated Metal Shelves are strong and prevent the accumulation of dust. Decorative bullnose front. Matte Black finish. Designed to be used with 14" gridwall bracket (BLK/14KB).

Large shelf, 50"L x 15"D
ES48/MAB

Small shelf, 23"L x 15"D
ES5/B



Mini-Ladder Bracket for Heavy Duty Slotted Standards. Fits 1" slots on 2" centers. Chrome finish.
RML6



Mini-Ladder Wall Bracket
Matte black finish.
BML3/MAB



Shelf Bracket
14" L.
Matte black finish.
BLK/14KB

GRID ACCESSORIES



12" Rectangular Tubing Faceout with Tab End
Matte black finish. sku #: BLK/R3
Chrome finish. sku #: RG/12



12" Round Tubing Faceout with Disk End
Matte black finish. sku #: BLK/12
Chrome finish. sku #: GW/12



12" Square Tubing Faceout with Ball End
Matte black finish. sku #: BLK/11
Chrome finish. sku #: GW/11



Matte Black Finish Grid Hooks
4" sku #: BLK/H4
6" sku #: BLK/H6
8" sku #: BLK/H8
10" sku #: BLK/H10
12" sku #: BLK/H12



Chrome Finish Grid Hooks
4" sku #: GW/H4
6" sku #: GW/H6
8" sku #: GW/H8
10" sku #: GW/H10
12" sku #: GW/H12



7-Ball Waterfall
18" Long.
Matte black finish. sku #: BLK/7B
Chrome finish. sku #: GW/7B



5-Hook Waterfall
18" Long.
Matte black finish. sku #: BLK/5H
Chrome finish. sku #: GW/5H

1-1/4" Dia. Round Tubing Hangrails



22" wide U-Shaped Hangrail
Matte black finish with 1/4" protective wire. sku #: BLHG681
Chrome finish. sku #: KHG681



48" Long Straight Hangrail
Matte black finish with 1/4" protective wire. sku #: BLHG684
Chrome finish. sku #: KHG684



32" Long Quarter Circle Hangrail
Matte black finish with 1/4" protective wire. sku #: BLHG680
Chrome finish. sku #: KHG680

Hangrail Brackets & 1/2" x 1-1/2" Rectangular Tubing



Hangrail Brackets - Matte black finish
4" Long - sku #: HML4/MAB
8" Long - sku #: HML8/MAB
12" Long - sku #: HML12/MAB



Matte Black Finish
with protective chrome strip.
24" Long sku #: REMAB2
48" Long sku #: REMAB4

Chrome Finish
24" Long sku #: RE2
48" Long sku #: RE4



End Cap
Matte black finish. sku #: EC4/MAB
Chrome finish sku #: EC4

Extended End Cap
Matte black finish. sku #: EC5/MAB
Chrome finish sku #: EC5



WHERE VALUE IS ALWAYS DISPLAYED

© 2013 Econoco Corporation
300 Karin Lane • Hicksville, New York 11801
800.645.7032 • info@econoco.com • www.econoco.com