

# Mirage Mini-Ladder Wall System





The Mirage Mini-Ladder rungs are designed to receive any wire grid accessory. The system is available in chrome & matte black finish. Combine the Mirage adjustable wall system with Mirage Floor Standing Costumers to create a functional and attractive retail store layout.

## COMPONENTS

### Mini-Ladder Post

87.5" high, including levelers. Ladder rungs are .25" dia, 3" wide on 1.5" centers. Uprights are .5" x 1.5" rectangular tubing.

Matte Black finish:  
# WML87/MAB

Chrome finish:  
# WML87/C

### Wall Channel



8' long white aluminum channel may be painted to match wall color. Due to various mounting techniques in different wall materials, we do not include holes or screws for mounting.

# WAC8W/W

### Anchor Bracket



12"D x 6"W bracket easily mounts into Wall Channel with included hardware. Bracket can be placed anywhere along the channel.

Matte Black finish  
# WK13/MAB

Chrome finish  
# WK13/C

### Floor Standing Costumers



*Go with faceouts & waterfalls to create a costumer or use two towers together with assorted accessories to create an impressive free-standing merchandising unit.*

Heavy 12" x 15" weighted base. Uses any grid accessories, sold separately. Matte Black finish.

72" Upright - # ML73/MAB

54" Upright - # ML55/MAB



## Interior Shelves



**Off The Wall** – The flexibility of the Mirage Mini-Ladder system allows the store merchandiser to easily change the appearance of any department by re-configuring the location of the vertical posts - by adding shelves or hangrails and by varying the distance between posts.

Just loosen two screws in the Mirage anchor bracket and you can adjust the location of the Mirage mini-ladder post. Changes in fixturing to meet seasonal merchandising demands can be made with very little effort.



**Interior shelves** go between Mini-Ladder Posts that are 48" apart on center. Perforated metal shelves prevent the accumulation of dust. Designed to be used with Interior Shelf brackets. Matte Black finish. 43"L x 14-1/2"D.

# MLS43/MAB



**Interior Shelf Brackets** must be used in pairs. Unique design fits Mini-Ladder Posts on either left or right sides. Set screws lock them in place. Matte Black finish.

# SML11/MAB

## Exterior Shelves



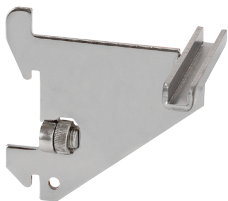
**On The Wall** – Exterior shelves are also great when retail space has existing heavyweight slotted standards. Ladder posts can be mounted to standards with 1" slots on 2" centers using the Mini-Ladder Bracket for Standards (RML6). You may also mount the Ladder Posts directly to wall using two Wall brackets (BML3/MAB).



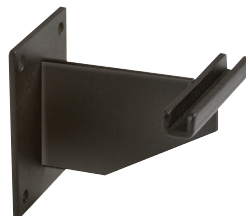
**Perforated Metal Shelves** are strong and prevent the accumulation of dust. Decorative bullnose front. Matte Black finish. Designed to be used with 14" gridwall bracket (BLK/14KB).

Large shelf, 50"L x 15"D  
# ES48/MAB

Small shelf, 23"L x 15"D  
# ES5/B



**Mini-Ladder Bracket** for Heavy Duty Slotted Standards. Fits 1" slots on 2" centers. Chrome finish.  
# RML6



**Mini-Ladder Wall Bracket**  
Matte black finish.  
# BML3/MAB



**Shelf Bracket**  
14" L.  
Matte black finish.  
# BLK/14KB

## GRID ACCESSORIES



**12" Rectangular Tubing Faceout with Tab End**  
Matte black finish. sku #: BLK/R3  
Chrome finish. sku #: RG/12



**12" Round Tubing Faceout with Disk End**  
Matte black finish. sku #: BLK/12  
Chrome finish. sku #: GW/12



**12" Square Tubing Faceout with Ball End**  
Matte black finish. sku #: BLK/11  
Chrome finish. sku #: GW/11



### Matte Black Finish Grid Hooks

4" sku #: BLK/H4  
6" sku #: BLK/H6  
8" sku #: BLK/H8  
10" sku #: BLK/H10  
12" sku #: BLK/H12

### Chrome Finish Grid Hooks

4" sku #: GW/H4  
6" sku #: GW/H6  
8" sku #: GW/H8  
10" sku #: GW/H10  
12" sku #: GW/H12



### 7-Ball Waterfall

18" Long.  
Matte black finish. sku #: BLK/7B  
Chrome finish. sku #: GW/7B



### 5-Hook Waterfall

18" Long.  
Matte black finish. sku #: BLK/5H  
Chrome finish. sku #: GW/5H

## 1-1/4" Dia. Round Tubing Hangrails



**22" wide U-Shaped Hangrail**  
Matte black finish with 1/4" protective wire. sku #: BLHG681  
Chrome finish. sku #: KHG681



**48" Long Straight Hangrail**  
Matte black finish with 1/4" protective wire. sku #: BLHG684  
Chrome finish. sku #: KHG684



**32" Long Quarter Circle Hangrail**  
Matte black finish with 1/4" protective wire. sku #: BLHG680  
Chrome finish. sku #: KHG680

## Hangrail Brackets & 1/2" x 1-1/2" Rectangular Tubing



**Hangrail Brackets - Matte black finish**  
4" Long – sku #: HML4/MAB  
8" Long – sku #: HML8/MAB  
12" Long – sku #: HML12/MAB



**Matte Black Finish**  
with protective chrome strip.  
24" Long sku #: REMAB2  
48" Long sku #: REMAB4

### Chrome Finish

24" Long sku #: RE2  
48" Long sku #: RE4



### End Cap

Matte black finish. sku #: EC4/MAB  
Chrome finish sku #: EC4

### Extended End Cap

Matte black finish. sku #: EC5/MAB  
Chrome finish sku #: EC5



© 2025 Econoco Corporation  
300 Karin Lane • Hicksville, New York 11801  
800.645.7032 • info@econoco.com • www.econoco.com