



MANUFACTURER OF STORE FIXTURES AND DISPLAYS SINCE 1925



Deluxe Showcases, Privacy Panels, & Cash Wraps

Showcases





- LED-lit showcase to accentuate product within the locked glass display case. LED lighting lasts longer than traditional halogen showcase lighting and it's much more energy efficient. Includes four storage drawers. The cabinet has an inline power switch inconspicuously placed under the steel base for easy access.
- The lockable glass showcase display area has heavy duty $\frac{3}{4}$ extension drawer slides allowing you to pull the entire showcase floor open for quick access to your cannabis merchandise display. Feel comfortable in knowing that your product is safely and securely displayed. Each display includes a set of keys for the showcase lock.
- The wooden storage cabinet area includes four magnetically locked drawers. You can use this space for product literature, inventory storage and merchandise overflow. Each drawer locks individually. Each cabinet includes a magnetic key for the drawers. Drawers have a handle style drawer pull.
- Our sturdy steel 1" square tubing base is strong and durable yet it is not over powering as a solid wood showcase display would be. The base creates a nice open feeling on the floor of your retail space. The powder coated steel base finish matches perfectly to the glass showcase display top that ties the whole style together.

Showcases



SPECIFICATIONS:
Item # DDKIT1B
Showcase Display Cabinet
with LED Lighting & Storage
24"L x 48"W x 40"H
Matte Black with
Black Storage Drawers



SPECIFICATIONS:
Item # DDKIT1W
Showcase Display Cabinet
with LED Lighting & Storage
24"L x 48"W x 40"H

Gloss White with
White Storage Drawers

Showcase Displays with LED Lighting & Storage



SPECIFICATIONS:
Item # DDKIT1SC
Showcase Display Cabinet
with LED Lighting & Storage
24"L x 48"W x 40"H

Satin Chrome with
White Barn Wood Storage Drawers

Showcases



SPECIFICATIONS:
Item # DDKIT3SC
Showcase Display Cabinet
with LED Lighting
24"L x 48"W x 40"H

Satin Chrome



SPECIFICATIONS:
Item # DDKIT3W
Showcase Display Cabinet
with LED Lighting
24"L x 48"W x 40"H

Gloss White

Showcase Displays with LED Lighting



SPECIFICATIONS:
Item # DDKIT3B
Showcase Display Cabinet
with LED Lighting
24"L x 48"W x 40"H

Matte Black

Storage Cabinet



SPECIFICATIONS:
Item # DDKIT2B
Cannabis Display
Storage Cabinet
24"L x 48"W x 34"H

Matte Black



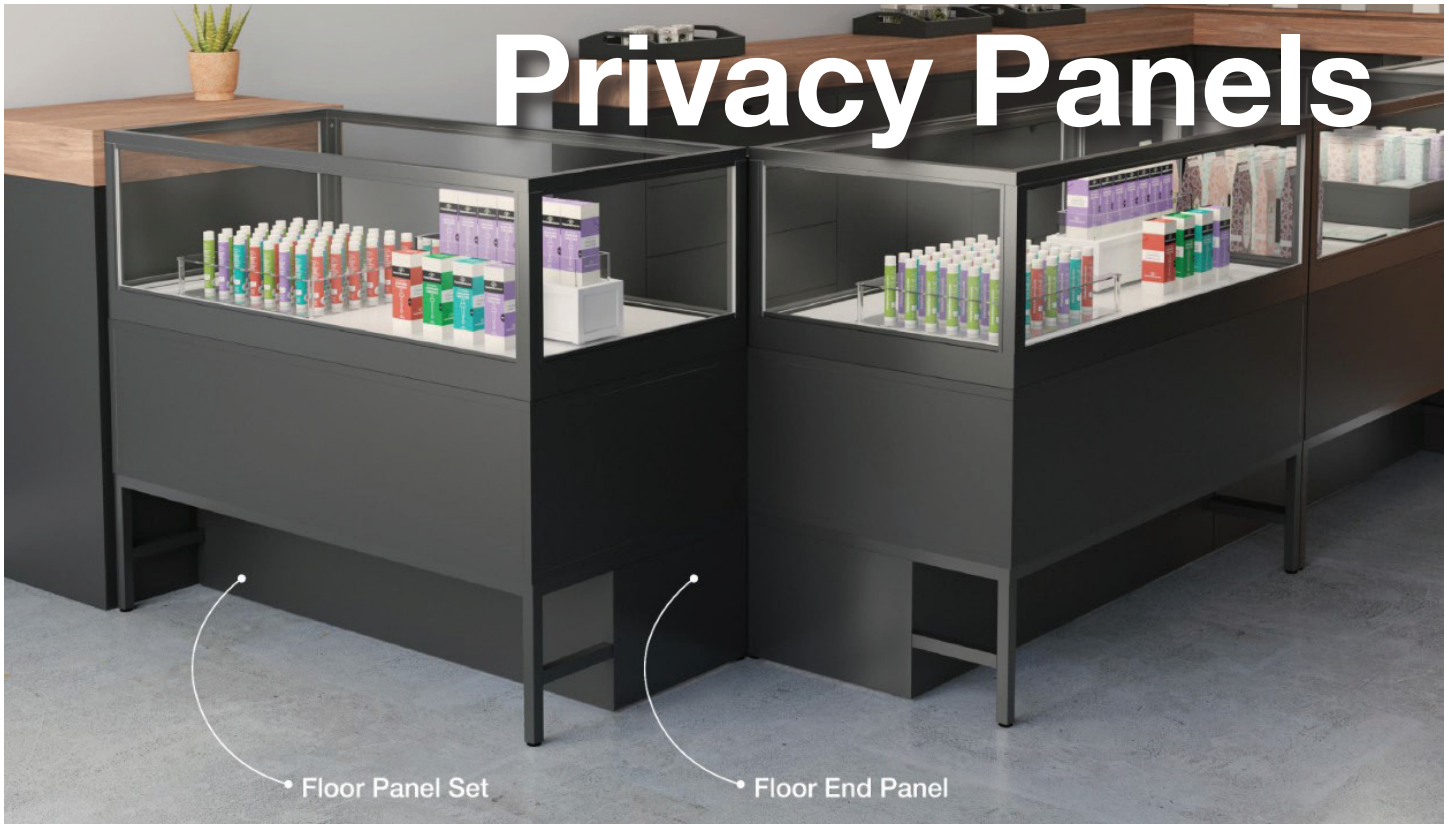
SPECIFICATIONS:
Item # DDKIT2W
Cannabis Display
Storage Cabinet
24"L x 48"W x 34"H

Gloss White



SPECIFICATIONS:
Item # DDKIT2SC
Cannabis Display
Storage Cabinet
24"L x 48"W x 34"H

White Barn Wood &
Satin Chrome Base



Privacy panels give you the ability to close off the open space at the bottom of our showcases, allowing you to create a counter area that completely separates you and the customer. The Center Panel Kit is used for the front of our showcases. The End Panel Kit can be used on either the left or right side of the showcase. Panels easily mount to existing showcase frames.

Center Panel Kit

Item	Description	Finish	MDF Finish
DDKIT1PPB	Center Panel for DDKIT1B	Matte Black	Matte Black Melamine
DDKIT1PPW	Center Panel for DDKIT1W	Gloss White	Gloss White Melamine
DDKIT1PPSC	Center Panel for DDKIT1SC	Satin Chrome	White Barnwood Melamine
DDKIT2PPB	Center Panel for DDKIT2B	Matte Black	Matte Black Melamine
DDKIT2PPW	Center Panel for DDKIT2W	Gloss White	Gloss White Melamine
DDKIT2PPSC	Center Panel for DDKIT2SC	Satin Chrome	White Barnwood Melamine
DDKIT3PPB	Center Panel for DDKIT3B	Matte Black	Matte Black Melamine
DDKIT3PPW	Center Panel for DDKIT3W	Gloss White	Gloss White Melamine
DDKIT3PPSC	Center Panel for DDKIT3SC	Satin Chrome	White Barnwood Melamine

End Panel Kit

Item	Description	Finish	MDF Finish
DDKIT1ECB	End panel for DDKIT1B	Matte Black	Matte Black Melamine
DDKIT1ECW	End panel for DDKIT1W	Gloss White	Gloss White Melamine
DDKIT1ECSC	End panel for DDKIT1SC	Satin Chrome	White Barnwood Melamine
DDKIT2ECB	End panel for DDKIT2B	Matte Black	Matte Black Melamine
DDKIT2ECW	End panel for DDKIT2W	Gloss White	Gloss White Melamine
DDKIT2ECSC	End panel for DDKIT2SC	Satin Chrome	White Barnwood Melamine
DDKIT3ECB	End panel for DDKIT3B	Matte Black	Matte Black Melamine
DDKIT3ECW	End panel for DDKIT3W	Gloss White	Gloss White Melamine
DDKIT3ECSC	End panel for DDKIT3SC	Satin Chrome	White Barnwood Melamine

Showcases

- Our line of Deluxe 55" Cash Wrap Retail Counters for retailers have been beautifully designed and constructed. These large cash wraps are available in your choice of two finishes: a Matte White body with a Raw Oak countertop and a Matte Black body with a Matte Black Woodgrain countertop.
- These cash wrap counters include four drawers, each with full extension, soft-close drawer slides. The top two left drawers measure 18"L x 12-3/8"W x 4-3/4"H. The bottom left drawer measures 15"L x 12-3/8"W x 7-11/16"H.
- The bottom right drawer measures 15"L x 21-3/4"W x 7-11/16"H. These drawers all have a full width drawer pull in a high end aluminum finish.
- Three adjustable shelves in the middle of the unit measure 22-1/4" L x 14-3/8"W. The adjustable shelf on the right measures 22-1/4"L x 23-3/8"W.
- The countertop is a full 1-1/2 inches thick that is separated from the body by a decorative 1/8" reveal under the countertop which creates the hint of a floating countertop.
- Inside the cash wrap on the clerk side, we have thoughtfully included an access panel on the floor of the cash wrap to allow access for running wires if necessary. There is a channel behind the drawers for wire management as well. We include a 3" plastic grommet for you if you wish to drill a hole in the top of the cash wrap to align to your electronics configuration.



Deluxe 55" Cash Wrap Retail Counters



SPECIFICATIONS:

Item # DDCW55

Matte White with

Raw Oak Top

Item # DDCW55BLG

Matte Black

Cash Wraps

- Our line of Deluxe 24" Cash Wrap Counters for retail environments are beautifully designed and constructed. The cash wraps are available in your choice of two finishes: a Matte White body with a Raw Oak countertop and a Matte Black body with a Matte Black Woodgrain countertop.
- These cash wrap counters measure 26"L x 24"W x 42.375"H and includes a 9"L x 20-1/2"W x 5-1/4"H drawer with full extension, soft-close drawer slides. There are also two adjustable shelves that measure 23-5/8"L x 22-1/2"W included.
- One of the highlights of this cash wrap design is our beautifully integrated waterfall style countertop. The top is a full 1-1/2 inches thick that seemingly pours over the front edge of the cash wrap creating a beautiful focal point in your retail environment. We have also included a decorative reveal under the countertop which creates the hint of a floating countertop.
- Inside the cash wrap on the clerk side, we have thoughtfully included an access panel on the floor of the cash wrap to allow access for running wires if necessary. We include a 3" diameter plastic grommet for you if you wish to drill a hole in the top of the cash wrap to align to your electronics configuration.
- Our Deluxe Corner Retail Pedestal Counters measure 22"L x 22"W x 27-7/8"H.



Deluxe 24" Cash Wrap Retail Counters



SPECIFICATIONS:

Item # DDCW24
Matte White with
Raw Oak Top

Item # DDCW24BLG
Matte Black

Corner Pedestals



SPECIFICATIONS:

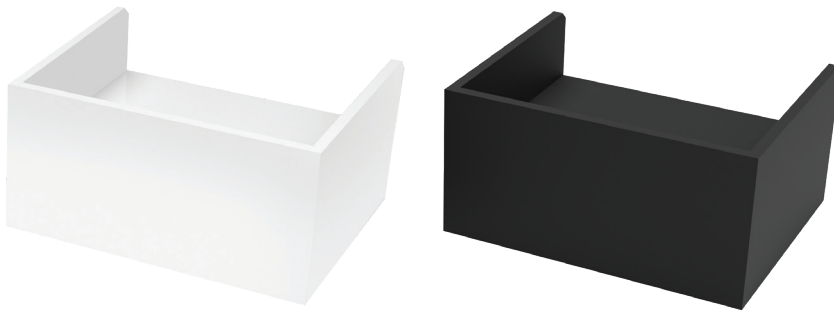
Item # DDPED22
Matte White with
Raw Oak Top

Item # DDPED22BLG
Matte Black

Register Wells

For Deluxe 55" Cash Wrap Counters

- Each register well includes a full width drawer that measures 24-7/16"W x 13-1/8"L x 3-3/5"H with full extension drawer slides allowing you to pull the drawer all the way out, without having to reach into the back of the drawer. The drawer has a soft-close feature, so no slamming drawers. Includes a full 14" deep drawer width aluminum drawer pull.
- The top shelf has plenty of room for most POS systems to sit at a comfortable height and measures 26-7/16"W x 21-13/16"L.
- The register wells may sit on top of the counter top, however, we recommend you have them permanently affixed to the counter top for security reasons. We do not include mounting hardware since every installation is different.



SPECIFICATIONS:

Item # DDRW28

Matte White

Item # DDRW28MAB

Matte Black



Toe Kick

For Deluxe Cash Wrap Collection

- Our toe kick is designed to specifically go with our Deluxe Line of Cash Wraps. The toe kick is in a matte black finish meant to “hide” smudges that may occur.
- The toe kick is used primarily when you have an uneven floor and you need to align the tops of the Deluxe Cash Wraps when they are side by side. Using shims on the bottom of your cash wraps to align the tops, may cause small unsightly gaps at the bottom of your cash wrap run. The toe kick is nearly 4"H x 96"L and can be trimmed as necessary to fit properly.
- Use a construction adhesive or heavy-duty double sided industrial tape to attach toe kick to front of cash wrap run. We recommend using a local contractor or handyman if you have trouble with your installation process.



SPECIFICATIONS:
Item # DDCWTKMAB

Matte Black

