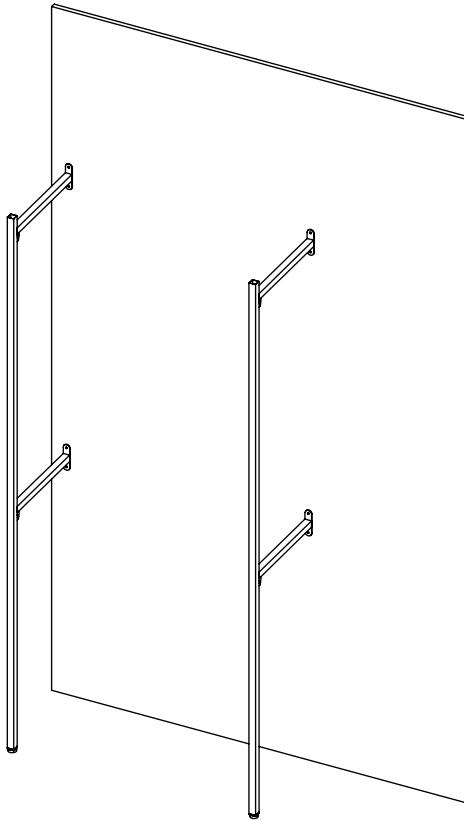
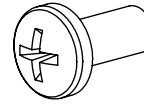


1" SQUARE TUBING OUTRIGGER

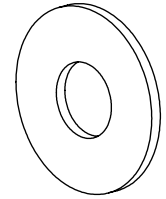
Item # KF5



INCLUDED HARDWARE



1x PER UPRIGHT
BUTTON HEAD SCREW



1x PER UPRIGHT
FLAT WASHER

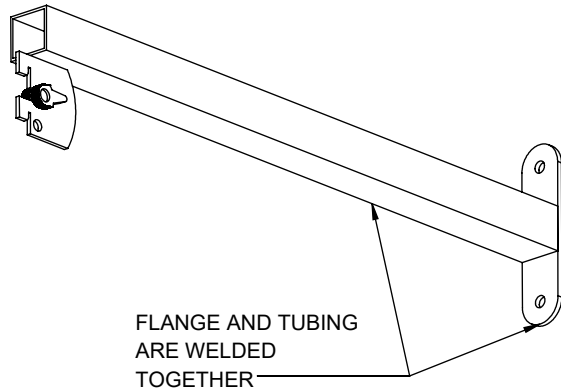
TOOLS REQUIRED

- TAPE MEASURE
- PHILLIPS HEAD SCREW DRIVER
- PLIERS
- BUBBLE LEVEL OR LASER LEVEL
- MOUNTING HARDWARE
(TO BE PROVIDED BY INSTALLER)
- LADDER

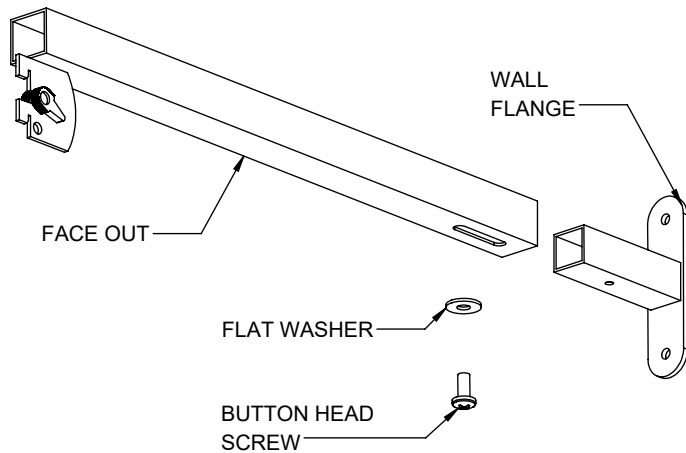
1

- IDENTIFY THE SOLID FACE OUT AND THE PARTS OF THE ADJUSTABLE FACE OUT.
- ASSEMBLE THE ADJUSTABLE FACE OUT AS SHOWN. SCREW CAN BE LOOSELY TIGHTENED IN THIS STEP.

SOLID FACE OUT(1x PER UPRIGHT)



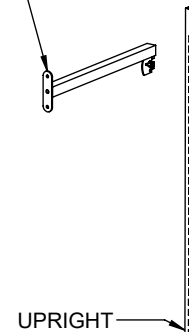
ADJUSTABLE FACE OUT(1x SET PER UPRIGHT)



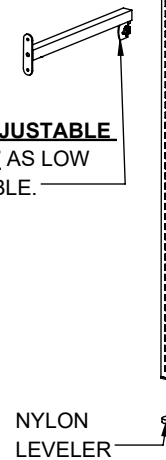
2

- SCREW IN NYLON LEVELERS
- INSERT THE WALL FACE OUTS INTO THE UPRIGHT AS SHOWN.
- CHECK THAT THE WALL FACE OUT IS SECURELY INSIDE THE UPRIGHT.
- ROTATE TENSIONER ON THE WALL FACE OUT UNTIL TIGHT. (THIS MAY REQUIRE PLIERS)

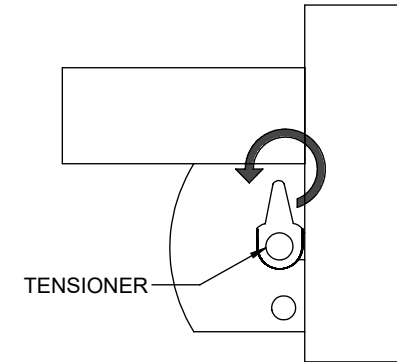
PLACE **SOLID FACE OUT** AS HIGH AS POSSIBLE



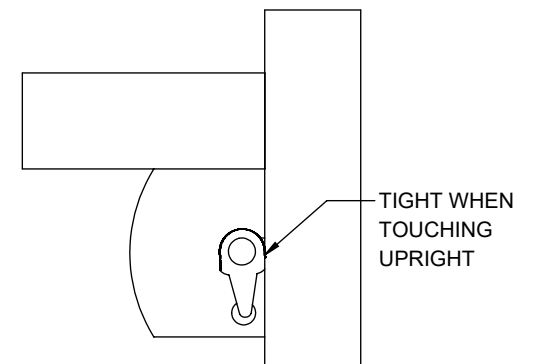
PLACE **ADJUSTABLE FACE OUT** AS LOW AS POSSIBLE.



TENSIONER LOOSE

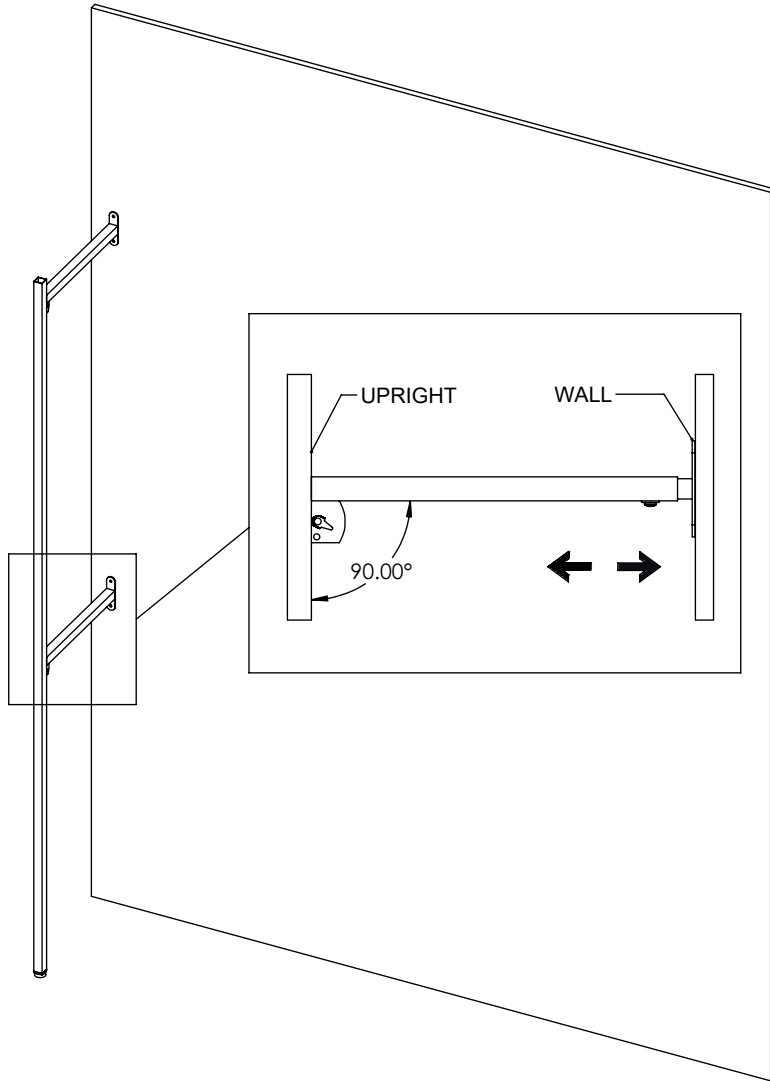


TENSIONER TIGHT



3

- POSITION UPRIGHT ONTO WALL.
- CHECK POST IS LEVEL BEFORE SCREWING INTO WALL.
- ADJUST THE ADJUSTABLE FACE OUT UNTIL THE UPRIGHT IS VERTICAL.
- TIGHTEN BUTTON HEAD SCREW.
- SCREW INTO WALL (HARDWARE TO BE PROVIDED BY INSTALLER).



4

- PLACE SECOND UPRIGHT ON THE WALL. **DO NOT SCREW TO WALL YET.**
- USE AN ACCESSORY SUCH AS A SHELF OR HANG RAIL TO SPACE OUT THE SECOND UPRIGHT.
- IF ACCESSORIES ARE NOT AVAILABLE, USE A TAPE MEASURE TO ADJUST THE ON CENTER DISTANCE BETWEEN UPRIGHTS. MAKE SURE THE ON CENTER DISTANCE IS THE SAME ON TOP AND BOTTOM.
- REPEAT INSTALLATION FROM PREVIOUS STEP.

