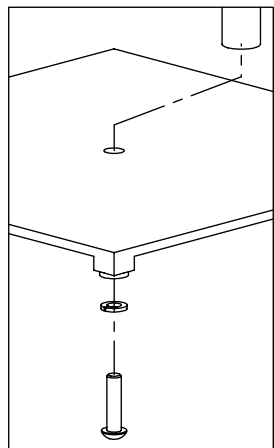
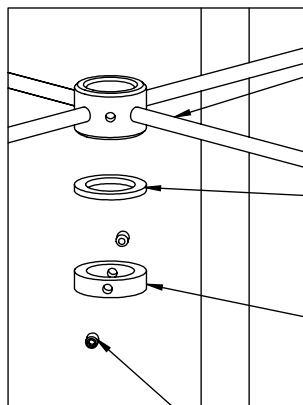


ASSEMBLY INSTRUCTIONS: **KREV26**

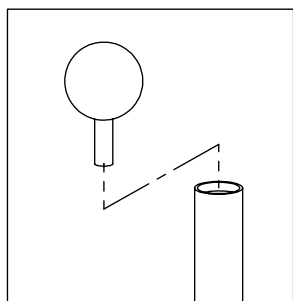


- 1 SECURE UPRIGHT TO BASE WITH SCREW AND WASHER AS SHOWN.

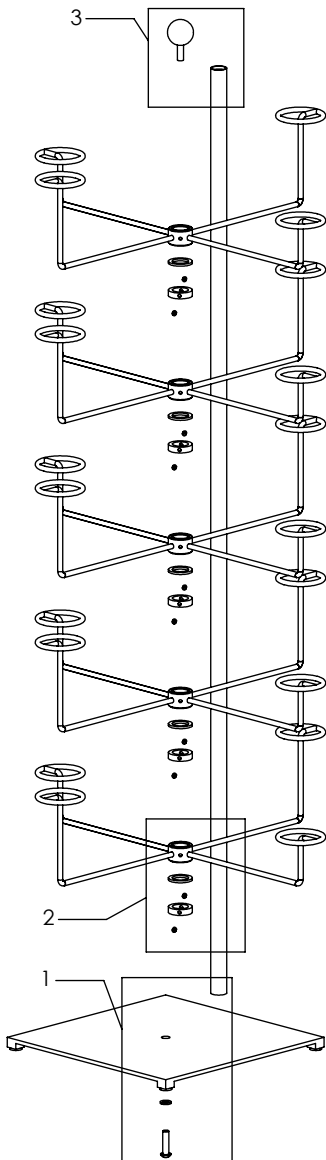


- 2D SLIDE ON WIRE MILLINERY DISPLAY.
2C SLIDE ON TEFLON WASHER (KREV26 ONLY)
2A SLIDE ON LOWER COLLAR (KREV26 ONLY)

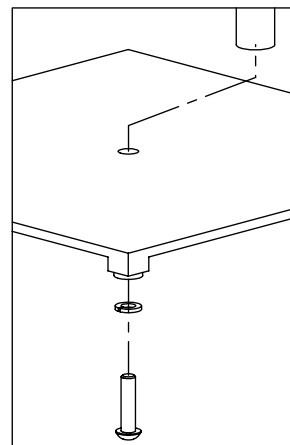
- 2B SECURE WITH (2) SET SCREWS AT DESIRED HEIGHT.



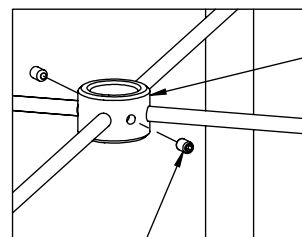
- 3 SCREW ON DECORATIVE BALL.



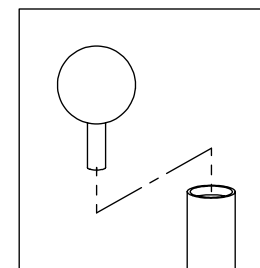
ASSEMBLY INSTRUCTIONS: **K26**



- 1 SECURE UPRIGHT TO BASE WITH SCREW AND WASHER AS SHOWN.



- 2A SLIDE ON WIRE MILLINERY DISPLAY.
2B SECURE WITH (2) SET SCREWS AT DESIRED HEIGHT.



- 3 SCREW ON DECORATIVE BALL.

